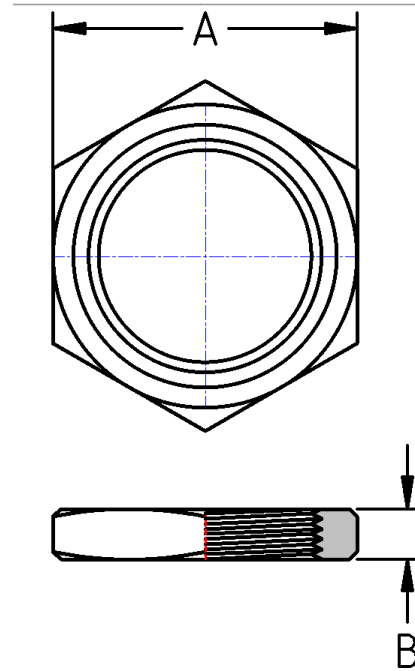




Locknut  
**150# Malleable Iron**  
Inches / Pounds



Nominal Pipe Size	Nominal Width Across Flats (A)	Height (B)	Approx. Weight (in Pounds)
1/8	0.69	0.20	0.02
1/4	0.84	0.26	0.04
3/8	1.00	0.29	0.04
1/2	1.18	0.32	0.08
3/4	1.43	0.35	0.10
1	1.75	0.39	0.18
1 1/4	2.10	0.43	0.22
1 1/2	2.35	0.48	0.36
2	2.88	0.54	0.52
2 1/2	3.86	0.60	1.10
3	4.62	0.68	1.50
4	5.79	0.81	2.68

- \*Malleable Castings conform to ASTM A197***
- \*Hot-Dipped Galvanized Fittings conform to ASTM A153***
- \*Malleable Fitting Dimensions conform to ASME B16.3***
- \*Malleable Bushings, Plugs and Locknuts conform to ASME B16.14***
- \*Malleable Unions conform to ASME B16.39***
- \*NPT Threads on all fittings conform to ASME B1.20.1***