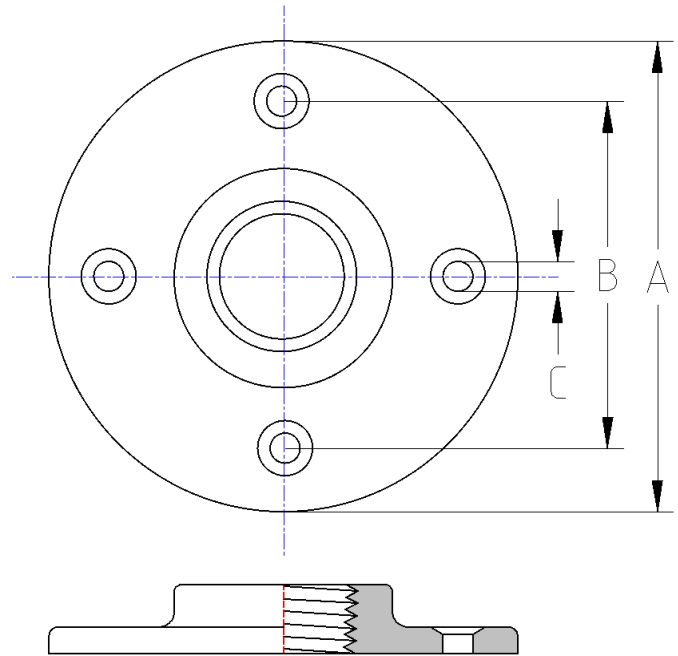




Floor Flange  
**150# Malleable Iron**  
Inches / Pounds



| Nominal Pipe Size | Flange OD (A) | Bolt Circle (B) | Hole Size (C) | Approximate Weight (in Pounds) |
|-------------------|---------------|-----------------|---------------|--------------------------------|
| 3/8               | 3.50          | 2.50            | 0.25          | 0.26                           |
| 1/2               | 3.50          | 2.50            | 0.25          | 0.36                           |
| 3/4               | 3.50          | 2.50            | 0.25          | 0.50                           |
| 1                 | 4.00          | 3.00            | 0.25          | 0.60                           |
| 1 1/4             | 4.00          | 3.00            | 0.25          | 0.88                           |
| 1 1/2             | 4.50          | 3.50            | 0.31          | 1.08                           |
| 2                 | 5.50          | 4.25            | 0.31          | 1.58                           |

***\*Malleable Castings conform to ASTM A197***

***\*Hot-Dipped Galvanized Fittings conform to ASTM A153***

***\*Malleable Fitting Dimensions conform to ASME B16.3***

***\*Malleable Bushings, Plugs and Locknuts conform to ASME B16.14***

***\*Malleable Unions conform to ASME B16.39***

***\*NPT Threads on all fittings conform to ASME B1.20.1***