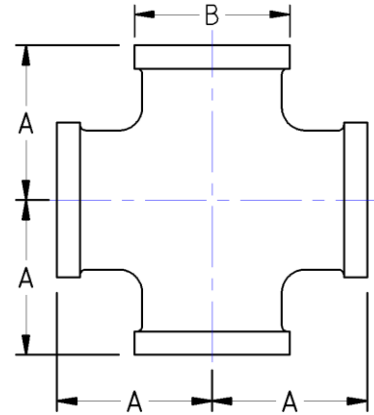




Cross  
**150# Malleable Iron**  
Inches / Pounds



Nominal Pipe Size	Center to End (A)	Outside Diameter (B)	Nominal Metal Thickness	Approximate Weight (in Pounds)
1/8	0.69	0.69	0.09	0.12
1/4	0.81	0.84	0.09	0.19
3/8	0.95	1.01	0.10	0.28
1/2	1.12	1.20	0.10	0.44
3/4	1.31	1.46	0.12	0.65
1	1.50	1.77	0.13	0.97
1 1/4	1.75	2.15	0.14	1.59
1 1/2	1.94	2.43	0.15	1.89
2	2.25	2.96	0.17	2.93
2 1/2	2.70	3.59	0.21	5.50
3	3.08	4.28	0.23	8.15
4	3.79	4.84	0.25	14.90

- \*Malleable Castings conform to ASTM A197***
- \*Hot-Dipped Galvanized Fittings conform to ASTM A153***
- \*Malleable Fitting Dimensions conform to ASME B16.3***
- \*Malleable Bushings, Plugs and Locknuts conform to ASME B16.14***
- \*Malleable Unions conform to ASME B16.39***
- \*NPT Threads on all fittings conform to ASME B1.20.1***