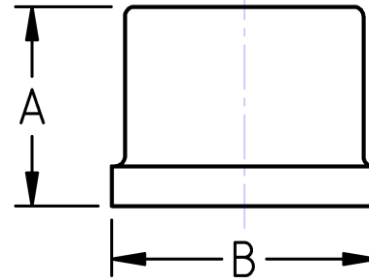




Cap  
**150# Malleable Iron**  
Inches / Pounds



Nominal Pipe Size	End to End (A)	Outside Diameter (B)	Approx. Weight (in Pounds)
1/8	0.53	0.69	0.05
1/4	0.63	0.84	0.07
3/8	0.74	1.01	0.11
1/2	0.87	1.20	0.15
3/4	0.97	1.46	0.22
1	1.16	1.77	0.35
1 1/4	1.28	2.15	0.54
1 1/2	1.33	2.43	0.68
2	1.45	2.96	0.96
2 1/2	1.70	3.59	1.72
3	1.80	4.28	2.55
3 1/2	1.90	4.84	3.12
4	2.08	5.40	4.60
5	2.32	6.58	6.42
6	2.55	7.77	9.90
8	3.20	9.80	16.90

- \*Malleable Castings conform to ASTM A197***
- \*Hot-Dipped Galvanized Fittings conform to ASTM A153***
- \*Malleable Fitting Dimensions conform to ASME B16.3***
- \*Malleable Bushings, Plugs and Locknuts conform to ASME B16.14***
- \*Malleable Unions conform to ASME B16.39***
- \*NPT Threads on all fittings conform to ASME B1.20.1***