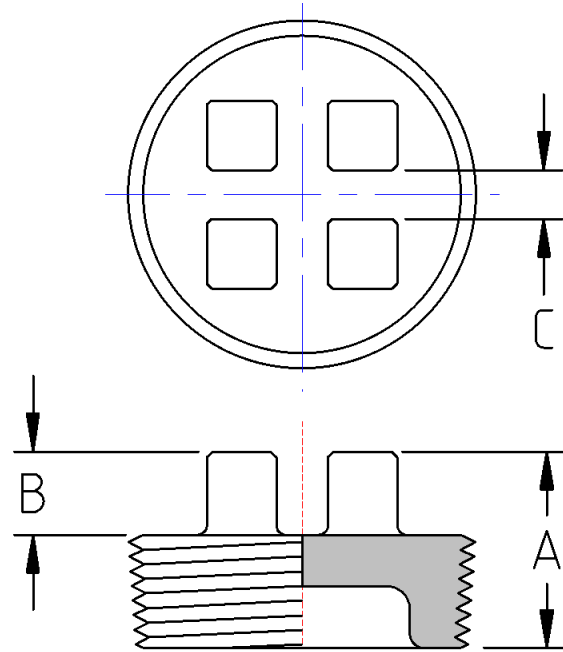




Bar Plug
150# Malleable Iron
Inches / Pounds



Nominal Pipe Size	Overall Height (A)	Height of Lugs (B)	Distance Between Lugs (C)	Approximate Weight (in Pounds)
4	2.30	1.00	0.88	3.80
5	2.45	1.00	0.88	5.25
6	2.70	1.25	1.25	8.20
8	3.00	1.38	1.50	20.70

- *Malleable Castings conform to ASTM A197***
- *Hot-Dipped Galvanized Fittings conform to ASTM A153***
- *Malleable Fitting Dimensions conform to ASME B16.3***
- *Malleable Bushings, Plugs and Locknuts conform to ASME B16.14***
- *Malleable Unions conform to ASME B16.39***
- *NPT Threads on all fittings conform to ASME B1.20.1***