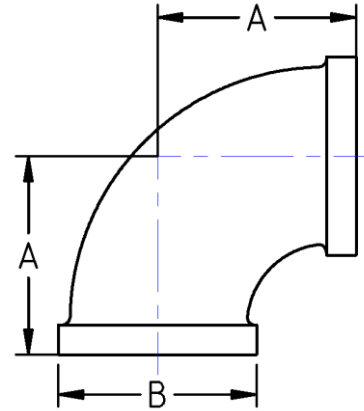




90° Elbow
150# Malleable Iron
Inches / Pounds



Nominal Pipe Size	Center to End (A)	Outside Diameter (B)	Nominal Metal Thickness	Approximate Weight (in Pounds)
1/8	0.69	0.69	0.09	0.06
1/4	0.81	0.84	0.09	0.11
3/8	0.95	1.01	0.10	0.17
1/2	1.12	1.20	0.10	0.24
3/4	1.31	1.46	0.12	0.40
1	1.50	1.77	0.13	0.64
1 1/4	1.75	2.15	0.14	0.95
1 1/2	1.94	2.43	0.15	1.24
2	2.25	2.96	0.17	1.74
2 1/2	2.70	3.59	0.21	3.28
3	3.08	4.28	0.23	5.15
3 1/2	3.42	4.84	0.25	7.08
4	3.79	5.40	0.26	8.81
5	4.50	6.58	0.30	13.80
6	5.13	7.77	0.34	23.00
8	6.38	9.76	0.39	32.00

- *Malleable Castings conform to ASTM A197**
- *Hot-Dipped Galvanized Fittings conform to ASTM A153**
- *Malleable Fitting Dimensions conform to ASME B16.3**
- *Malleable Bushings, Plugs and Locknuts conform to ASME B16.14**
- *Malleable Unions conform to ASME B16.39**
- *NPT Threads on all fittings conform to ASME B1.20.1**