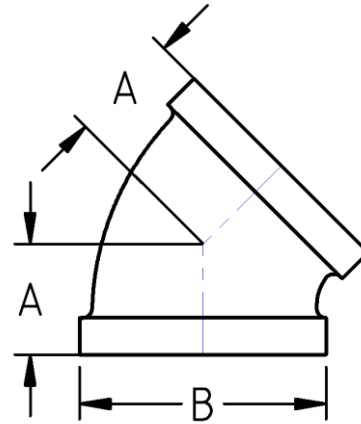




45° Elbow
150# Malleable Iron
Inches / Pounds



Nominal Pipe Size	Center to End (A)	Outside Diameter (B)	Nominal Metal Thickness	Approximate Weight (in Pounds)
1/8	0.60	0.69	0.09	0.07
1/4	0.73	0.84	0.09	0.11
3/8	0.80	1.01	0.10	0.15
1/2	0.88	1.20	0.10	0.22
3/4	0.98	1.46	0.12	0.34
1	1.12	1.77	0.13	0.57
1 1/4	1.29	2.15	0.14	0.84
1 1/2	1.43	2.43	0.15	1.14
2	1.68	2.96	0.17	1.70
2 1/2	1.95	3.59	0.21	2.97
3	2.17	4.28	0.23	4.65
4	2.61	4.84	0.25	7.62
5	3.05	5.40	0.26	12.10
6	3.46	6.58	0.30	18.20
8	4.00	9.76	0.39	26.10

- *Malleable Castings conform to ASTM A197***
- *Hot-Dipped Galvanized Fittings conform to ASTM A153***
- *Malleable Fitting Dimensions conform to ASME B16.3***
- *Malleable Bushings, Plugs and Locknuts conform to ASME B16.14***
- *Malleable Unions conform to ASME B16.39***
- *NPT Threads on all fittings conform to ASME B1.20.1***