



2-PC. SCREWED END BALL VALVE

SM3000ST



FEATURES

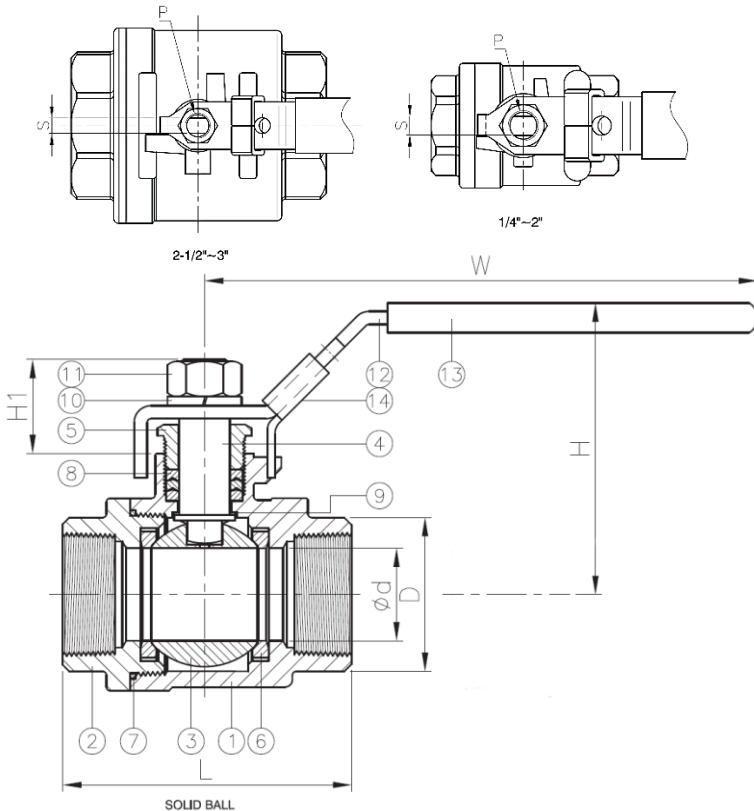
- Full Port
- Working Pressure: 1000 WOG
- Working Temperature: -4° F through 392°F
- Blow-out Proof Stem
- Locking Device
- Drilled and Tapped Mounting Pad

SPECIFICATIONS

- Thread Ends Conform to ASME/ANSI B1.20.1 (NPT)

Materials of Construction

Item	Part	Material Spec	
1	Body	ASTM A216- WCB	ASTM A351- CF8M
2	Cap		
3	Ball	ASTM A351-CF8M	
4	Stem	ASTM A276-316	
5	Gland Nut	AISI 304	
6	Seat	RTFE/RTFE	
7	Seal	PTFE	
8	Packing	RTFE	
9	Thrust Washer	PTFE	
10	Spring Washer	AISI 304	
11	Nut		
12	Handle	Stainless Steel	
13	Handle Sleeve	PVC	
14	Locking Device	Stainless Steel	



Dimensions (Inches)

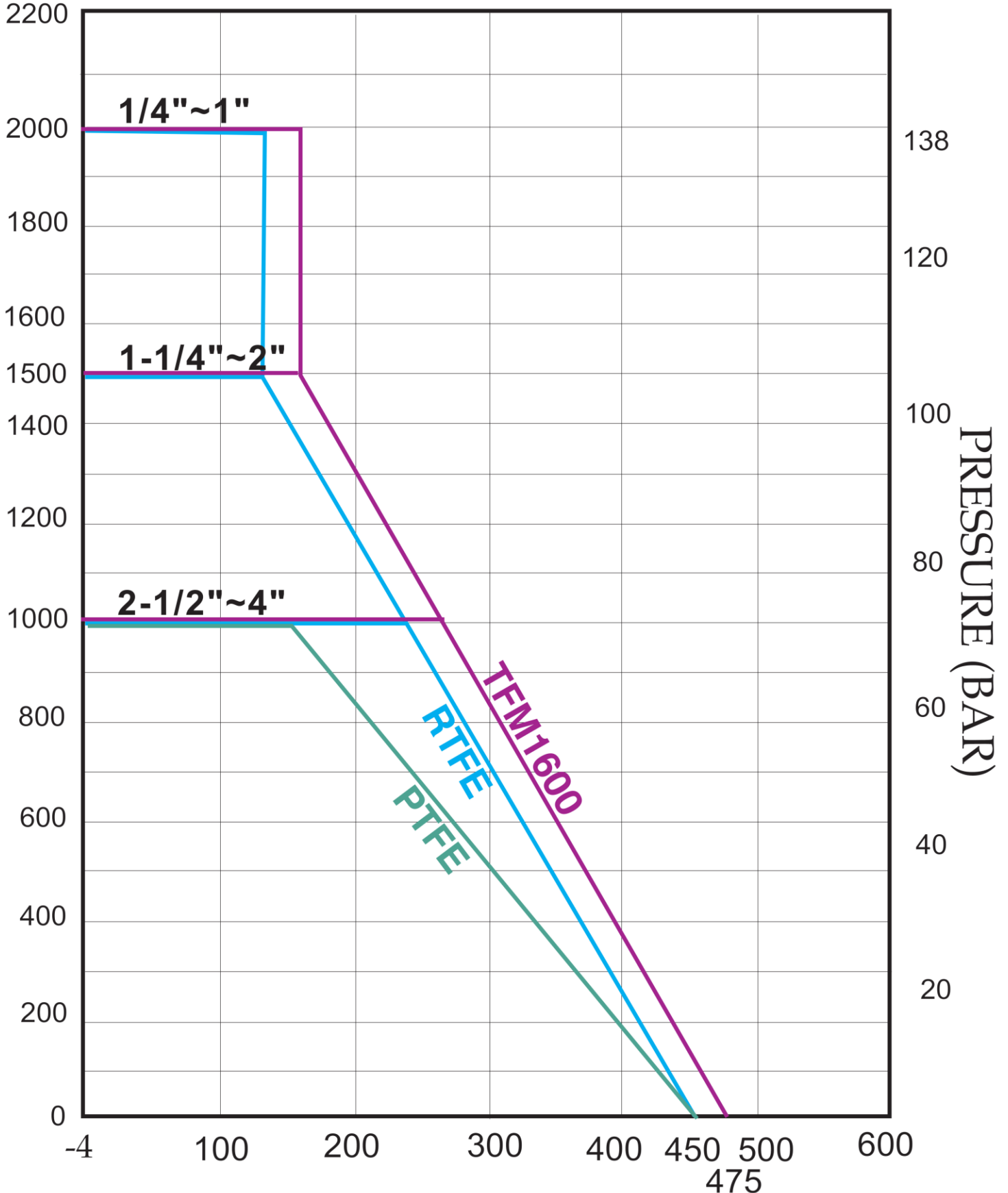
NPS	d	D	L	H	H1	W	S	P	Torque (in-lb)	Weight (lb)
1/4"	0.46	0.75	2.00	2.30	0.73	3.92	0.20	3/8"-24UNF	31.0	0.5
3/8"	0.49	0.89	2.00	2.30	0.73	3.92	0.20	3/8"-24UNF	35.4	0.5
1/2"	0.59	1.02	2.28	2.38	0.74	3.92	0.20	3/8"-24UNF	48.7	0.7
3/4"	0.79	1.26	2.58	2.48	0.92	4.84	0.26	7/16"-20UNF	66.4	1.0
1"	0.98	1.50	3.10	3.13	1.03	5.87	0.31	7/16"-20UNF	97.4	1.7
1-1/4"	1.26	1.89	3.54	3.39	0.93	5.87	0.31	7/16"-20UNF	133	2.5
1-1/2"	1.50	2.16	4.13	4.00	1.11	7.48	0.39	1/2"-20UNF	177	3.9
2"	1.97	2.64	4.88	4.3	1.11	7.48	0.39	1/2"-20UNF	354	5.9
2-1/2"	2.48	3.35	5.75	5.51	1.55	9.72	0.47	3/4"-10UNF	531	12.4
3"	2.99	3.94	6.43	5.85	1.55	9.72	0.47	3/4"-10UNF	752	16.5

The information presented on this sheet is correct at the time of publication. Service Metal reserves the right to change design, and/or material specifications without notice.

PRESSURE-TEMPERATURE RATING

TEMPERATURE °C

20 38 93 149 205 260 315



1/4"~1"

1-1/4"~2"

2-1/2"~4"

TFM 1600

PTFE

PTFE

PRESSURE (BAR)

PRESSURE (PSI)

TEMPERATURE °F

475