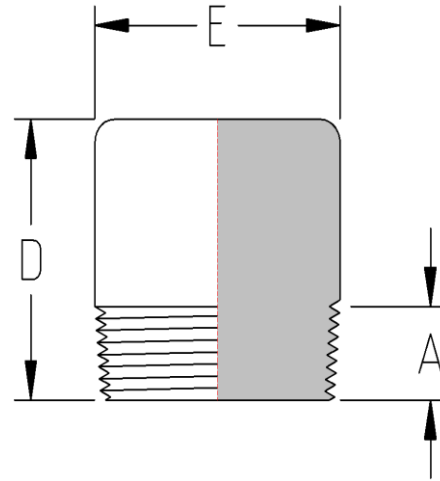




Threaded Round Head Plug
ASME B16.11
Forged Steel
Inches / Pounds



| Nominal Pipe Size | Thread Length Min. (A) | Minimum Length (D) | Nominal Head Diameter (E) | Approx. Weight (in Pounds) |
|-------------------|------------------------|--------------------|---------------------------|----------------------------|
| 1/8" | 0.38 | 1.38 | 0.41 | 0.125 |
| 1/4" | 0.44 | 1.62 | 0.53 | 0.125 |
| 3/8" | 0.50 | 1.62 | 0.69 | 0.188 |
| 1/2" | 0.56 | 1.75 | 0.84 | 0.25 |
| 3/4" | 0.62 | 1.75 | 1.06 | 0.375 |
| 1" | 0.75 | 2.00 | 1.31 | 0.75 |
| 1-1/4" | 0.81 | 2.00 | 1.69 | 1.125 |
| 1-1/2" | 0.81 | 2.00 | 1.91 | 1.563 |
| 2" | 0.88 | 2.5 | 2.38 | 3.00 |
| 2-1/2" | 1.06 | 2.75 | 2.88 | 4.75 |
| 3" | 1.12 | 2.75 | 3.5 | 7.62 |
| 4" | 1.25 | 3.00 | 4.5 | 12.87 |

****NPT Threads on all fittings conform to ASME B1.20.1***

****Dimensions comply with ASME B16.11***