

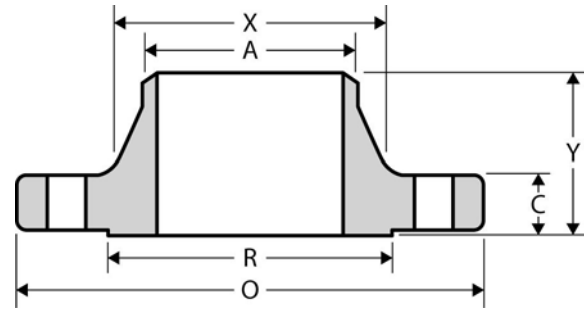


The Best Products, The Best Service...

# SERVICE METAL

ONE CALL GETS IT ALL

## Weld Neck Flange CLASS 600 Inches / Pounds



Nominal Pipe Size	Outside Diam. of Flange (O)	Thick. of Flange (C)	Diam. of Raised Face (R)	Diam. of Hub at Base (X)	Diam. of Hub at Point of Welding (A)	Length thru Hub (Y)	No. of Holes	Diam. of Holes	Diam. of Bolts	Diam. of Bolt Circle	Approx. Weight (in Pounds)
½	3.75	0.56	1.38	1.50	0.84	2.06	4	0.62	0.50	2.62	2
¾	4.62	0.62	1.69	1.88	1.05	2.25	4	0.75	0.62	3.25	4
1	4.88	0.69	2.00	2.12	1.32	2.44	4	0.75	0.62	3.50	4
1 ¼	5.25	0.81	2.50	2.50	1.66	2.62	4	0.75	0.62	3.88	6
1 ½	6.12	0.88	2.88	2.75	1.90	2.75	4	0.88	0.75	4.50	8
2	6.50	1.00	3.62	3.31	2.38	2.88	8	0.75	0.62	5.00	12
2 ½	7.50	1.12	4.12	3.94	2.88	3.12	8	0.88	0.75	5.88	18
3	8.25	1.25	5.00	4.62	3.50	3.25	8	0.88	0.75	6.62	23
3 ½	9.00	1.38	5.50	5.25	4.00	3.38	8	1.00	0.88	7.25	26
4	10.75	1.50	6.19	6.00	4.50	4.00	8	1.00	0.88	8.50	42
5	13.00	1.75	7.31	7.44	5.56	4.50	8	1.12	1.00	10.50	68
6	14.00	1.88	8.50	8.75	6.63	4.62	12	1.12	1.00	11.50	81
8	16.50	2.19	10.62	10.75	8.63	5.25	12	1.25	1.12	13.75	120
10	20.00	2.50	12.75	13.50	10.75	6.00	16	1.38	1.25	17.00	190
12	22.00	2.62	15.00	15.75	12.75	6.12	20	1.38	1.25	19.25	225
14	23.75	2.75	16.25	17.00	14.00	6.50	20	1.50	1.38	20.75	280
16	27.00	3.00	18.50	19.50	16.00	7.00	20	1.62	1.50	23.75	390
18	29.25	3.25	21.00	21.50	18.00	7.25	20	1.75	1.62	25.75	475
20	32.00	3.50	23.00	24.00	20.00	7.50	24	1.75	1.62	28.50	590
24	37.00	4.00	27.25	28.25	24.00	8.00	24	2.00	1.88	33.00	830

\* Dimensions conform to ASTM A/SA-105; ANSI B16.5

\* Bore to be determined at time of order.