

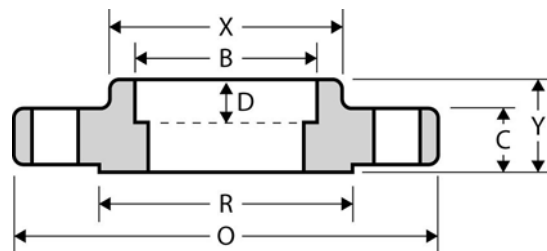
The Best Products, The Best Service...

# SERVICE METAL

ONE CALL GETS IT ALL



## Socket Weld Flange CLASS 600 Inches / Pounds



Nominal Pipe Size	Outside Diam. of Flange (O)	Thick. of Flange (C)	Diam. of Raised Face (R)	Diam. of Hub at Base (X)	Length thru Hub (Y)	Diam. of Bore (B)	Depth of Socket (D)	No. of Holes	Diam. of Holes	Diam. of Bolts	Diam. of Bolt Circle	Approx. Weight (in Pounds)
1/2	3.75	0.56	1.38	1.50	0.88	0.88	0.38	4	0.62	0.50	2.62	2
3/4	4.62	0.62	1.69	1.88	1.00	1.09	0.44	4	0.75	0.62	3.25	3
1	4.88	0.69	2.00	2.12	1.06	1.36	0.50	4	0.75	0.62	3.50	4
1 1/4	5.25	0.81	2.50	2.50	1.12	1.70	0.56	4	0.75	0.62	3.88	5
1 1/2	6.12	0.88	2.88	2.75	1.25	1.95	0.62	4	0.88	0.75	4.50	7
2	6.50	1.00	3.62	3.31	1.44	2.44	0.69	8	0.75	0.62	5.00	9
2 1/2	7.50	1.12	4.12	3.94	1.62	2.94	0.75	8	0.88	0.75	5.88	13
3	8.25	1.25	5.00	4.62	1.81	3.57	0.81	8	0.88	0.75	6.62	16
3 1/2	9.00	1.38	5.50	5.25	1.94	4.07	—	8	1.00	0.88	7.25	21
4	10.75	1.50	6.19	6.00	2.12	4.57	—	8	1.00	0.88	8.50	37
5	13.00	1.75	7.31	7.44	2.38	5.66	—	8	1.12	1.00	10.50	63
6	14.00	1.88	8.50	8.75	2.62	6.72	—	12	1.12	1.00	11.50	80
8	16.50	2.19	10.62	10.75	3.00	8.72	—	12	1.25	1.12	13.75	115
10	20.00	2.50	12.75	13.50	3.38	10.88	—	16	1.38	1.25	17.00	170
12	22.00	2.62	15.00	15.75	3.62	12.88	—	20	1.38	1.25	19.25	200
14	23.75	2.75	16.25	17.00	3.69	14.14	—	20	1.50	1.38	20.75	230
16	27.00	3.00	18.50	19.50	4.19	16.16	—	20	1.62	1.50	23.75	330
18	29.25	3.25	21.00	21.50	4.62	18.18	—	20	1.75	1.62	25.75	400
20	32.00	3.50	23.00	24.00	5.00	20.20	—	24	1.75	1.62	28.50	510
24	37.00	4.00	27.25	28.25	5.50	24.25	—	24	2.00	1.88	33.00	730

\* Dimensions conform to ASTM A/SA-105; ANSI B16.5