

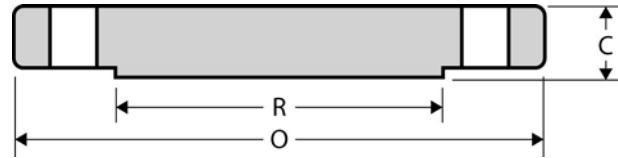
The Best Products, The Best Service...

# SERVICE METAL

ONE CALL GETS IT ALL



## Blind Flange CLASS 600 Inches / Pounds



Nominal Pipe Size	Outside Diam. of Flange (O)	Thick. of Flange (C)	Diam. of Raised Face (R)	No. of Holes	Diam. of Holes	Diam. of Bolts	Diam. of Bolt Circle	Approx. Weight (in Pounds)
1/2	3.75	0.56	1.38	4	0.62	0.50	2.62	2
3/4	4.62	0.62	1.69	4	0.75	0.62	3.25	3
1	4.88	0.69	2.00	4	0.75	0.62	3.50	4
1 1/4	5.25	0.81	2.50	4	0.75	0.62	3.88	5
1 1/2	6.12	0.88	2.88	4	0.88	0.75	4.50	8
2	6.50	1.00	3.62	8	0.75	0.62	5.00	10
2 1/2	7.50	1.12	4.12	8	0.88	0.75	5.88	15
3	8.25	1.25	5.00	8	0.88	0.75	6.62	20
3 1/2	9.00	1.38	5.50	8	1.00	0.88	7.25	29
4	10.75	1.50	6.19	8	1.00	0.88	8.50	41
5	13.00	1.75	7.31	8	1.12	1.00	10.50	68
6	14.00	1.88	8.50	12	1.12	1.00	11.50	86
8	16.50	2.19	10.62	12	1.25	1.12	13.75	140
10	20.00	2.50	12.75	16	1.38	1.25	17.00	230
12	22.00	2.62	15.00	20	1.38	1.25	19.25	295
14	23.75	2.75	16.25	20	1.50	1.38	20.75	355
16	27.00	3.00	18.50	20	1.62	1.50	23.75	495
18	29.25	3.25	21.00	20	1.75	1.62	25.75	630
20	32.00	3.50	23.00	24	1.75	1.62	28.50	810
24	37.00	4.00	27.25	24	2.00	1.88	33.00	1250

\* Dimensions conform to ASTM A/SA-105; ANSI B16.5