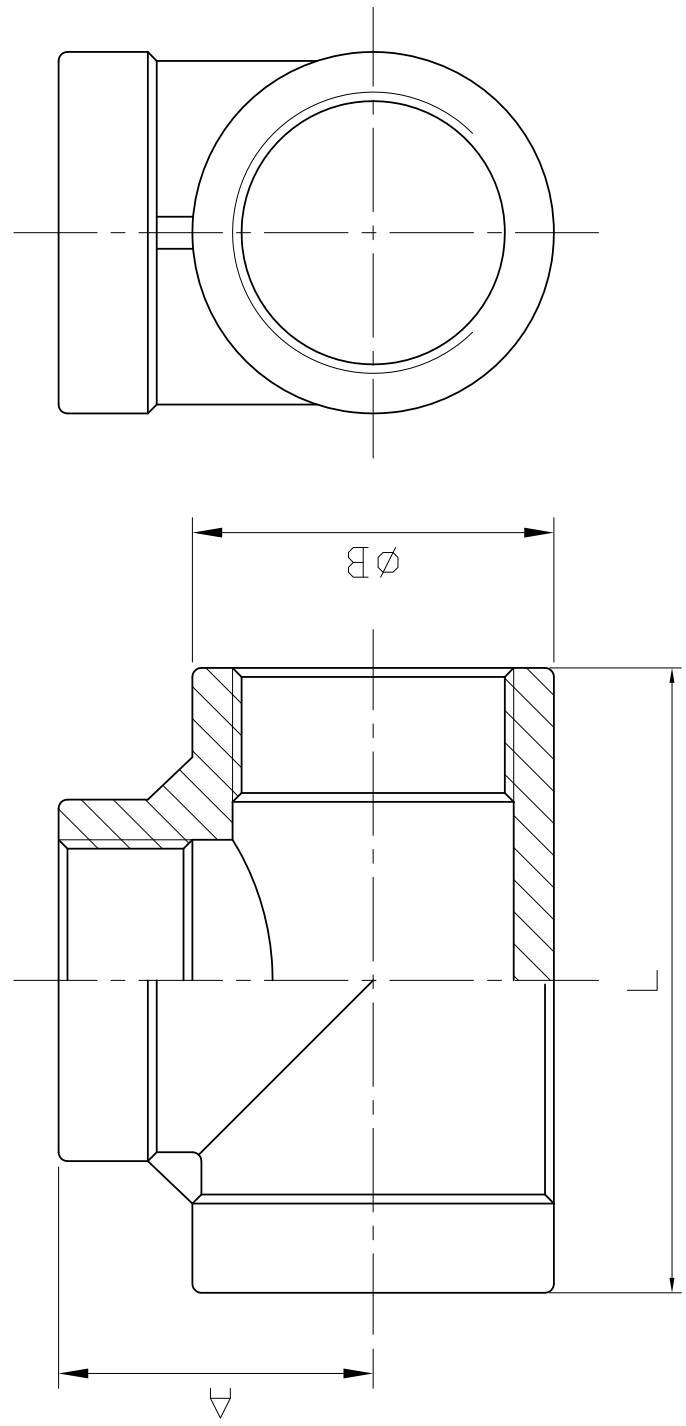


# TEE

0.5-3	GENERAL
6-30	TOLERANCE
31-120	
121-320	
321-1000	
0.01	
0.02	
0.03	
0.05	
0.08	
0.1	
0.25	
0.63	
1.6	
0.2	
Ra	JIS



SIZE	1/8"		1/4"		3/8"		2-1/2" (NPT)		2-1/2" (PS)		3"		4"	
	mm	in	mm	in	mm	in	mm	in	mm	in	mm	in	mm	in
A	17	0.67	19.5	0.77	22	0.87	64	2.52	68	2.68	72	2.83	91	3.58
B	15	0.59	18.5	0.73	22	0.87	81	3.19	83.5	3.29	100	3.94	126.5	4.98
L	34	1.34	39	1.54	45	1.77	129	5.08	136	5.35	144	5.67	182	7.17
Weight	0.034	0.075	0.047	0.104	0.066	0.146	1.19	2.623	1.01	2.227	1.53	3.373	2.677	5.902
	kg	lb	kg	lb	kg	lb	kg	lb	kg	lb	kg	lb	kg	lb

Tolerance:  $\pm 0.5\text{mm}(1/8" \sim 3/8")$   
 $\pm 0.8\text{mm}(2-1/2" \sim 4")$

△		
△		
△		
Revise	Description	Date
DRAWING NO.		Approve

CHECK BY	DRAWING BY	DATE	SPECIFICATION
	<i>Ray</i>	Oct.12.2020	<b>Tee</b>
			MATERIAL
			304/316
			PROCESS/MP.
			UNIT / SCALE
			mm

**SERVICE METAL**  
 Pipe Fittings, Flanges & Valves

F04 -20