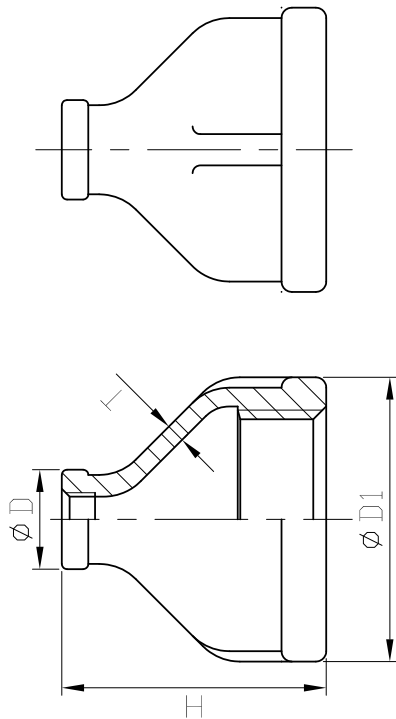


REDUCER COUPLING



SIZE	D(Min)		D1(Min)		H(Min)		T		Weight	
	mm	in	mm	in	mm	in	mm	in	kg	lb
1/4"	21.34	0.84	19.05	0.75	25.4	1	2.29	0.09	0.028	0.062
3/8"	25.65	1.01	19.05	0.75	28.45	1.12	2.54	0.1	0.037	0.082
	25.65	1.01	21.34	0.84	28.45	1.12	2.54	0.1	0.038	0.084
1/2"	30.48	1.2	19.05	0.75	35.05	1.38	2.54	0.1	0.062	0.137
	30.48	1.2	21.34	0.84	35.05	1.38	2.54	0.1	0.065	0.143
3/4"	37.08	1.46	19.05	0.75	38.1	1.5	3.05	0.12	0.089	0.196
	37.08	1.46	21.34	0.84	38.1	1.5	3.05	0.12	0.092	0.203
1"	44.96	1.77	19.05	0.75	41.15	1.62	3.3	0.13	0.137	0.302
	44.96	1.77	21.34	0.84	41.15	1.62	3.3	0.13	0.138	0.304
1-1/4"	54.61	2.15	19.05	0.75	50.8	2	3.56	0.14	0.221	0.487
	54.61	2.15	21.34	0.84	50.8	2	3.56	0.14	0.221	0.487
1-1/2"	61.72	2.43	19.05	0.75	53.85	2.12	3.81	0.15	0.273	0.602
	61.72	2.43	21.34	0.84	53.85	2.12	3.81	0.15	0.276	0.608
2"	75.18	2.96	19.05	0.75	63.5	2.5	4.32	0.17	0.442	0.974
	75.18	2.96	21.34	0.84	63.5	2.5	4.32	0.17	0.449	0.99
2-1/2"	86.07	3.39	19.05	0.75	75.18	2.96	5.06	0.2	0.532	1.173
	86.07	3.39	21.34	0.84	75.18	2.96	5.06	0.2	0.532	1.173
3"	101.6	4	19.05	0.75	93.47	3.68	5.84	0.23	1.021	2.251
	101.6	4	21.34	0.84	93.47	3.68	5.84	0.23	1.021	2.251
3-1/2"	128.52	5.06	19.05	0.75	111.25	4.38	6.6	0.26	1.847	4.072
	128.52	5.06	21.34	0.84	111.25	4.38	6.6	0.26	1.778	3.92
4"	152.4	6	19.05	0.75	128.52	5.06	7.518	0.296	1.863	4.107
	152.4	6	21.34	0.84	128.52	5.06	7.518	0.296	1.917	4.226
4-1/2"	165.1	6.5	19.05	0.75	141.3	5.55	8.255	0.325	2.079	4.583
	165.1	6.5	21.34	0.84	141.3	5.55	8.255	0.325	2.079	4.583

SIZE	D(Min)		D1(Min)		H(Min)		T		Weight	
	mm	in	mm	in	mm	in	mm	in	kg	lb
1/8"	75.18	2.96	19.05	0.75	63.5	2.5	4.32	0.17	-	-
1/4"	75.18	2.96	21.34	0.84	63.5	2.5	4.32	0.17	-	-
2"	75.18	2.96	25.65	1.01	63.5	2.5	4.32	0.17	0.46	1.014
	75.18	2.96	30.48	1.2	63.5	2.5	4.32	0.17	0.442	0.974
3"	75.18	2.96	37.08	1.46	63.5	2.5	4.32	0.17	0.482	1.063
	75.18	2.96	44.96	1.77	63.5	2.5	4.32	0.17	0.522	1.151
4"	75.18	2.96	54.61	2.15	63.5	2.5	4.32	0.17	0.532	1.173
	75.18	2.96	61.72	2.43	63.5	2.5	4.32	0.17	0.532	1.173
5"	86.07	3.39	25.65	1.01	82.55	3.25	5.33	0.21	-	-
	86.07	3.39	30.48	1.2	82.55	3.25	5.33	0.21	-	-
6"	86.07	3.39	37.08	1.46	82.55	3.25	5.33	0.21	0.649	1.431
	86.07	3.39	44.96	1.77	82.55	3.25	5.33	0.21	0.653	1.44
7"	86.07	3.39	54.61	2.15	82.55	3.25	5.33	0.21	0.705	1.554
	86.07	3.39	61.72	2.43	82.55	3.25	5.33	0.21	0.724	1.596
8"	86.07	3.39	75.18	2.96	82.55	3.25	5.33	0.21	0.838	1.847
	101.6	4	30.48	1.2	93.47	3.68	5.84	0.23	-	-
9"	101.6	4	37.08	1.46	93.47	3.68	5.84	0.23	1.078	2.377
	101.6	4	44.96	1.77	93.47	3.68	5.84	0.23	0.991	2.185
10"	101.6	4	54.61	2.15	93.47	3.68	5.84	0.23	1.201	2.651
	101.6	4	61.72	2.43	93.47	3.68	5.84	0.23	1.085	2.392
11"	101.6	4	75.18	2.96	93.47	3.68	5.84	0.23	1.188	2.619
	101.6	4	86.07	3.39	93.47	3.68	5.84	0.23	1.203	2.652
12"	128.52	5.06	37.08	1.46	111.25	4.38	6.6	0.26	-	-
	128.52	5.06	44.96	1.77	111.25	4.38	6.6	0.26	1.847	4.072
13"	128.52	5.06	54.61	2.15	111.25	4.38	6.6	0.26	1.71	3.77
	128.52	5.06	61.72	2.43	111.25	4.38	6.6	0.26	1.778	3.92
14"	128.52	5.06	75.18	2.96	111.25	4.38	6.6	0.26	1.863	4.107
	128.52	5.06	86.07	3.39	111.25	4.38	6.6	0.26	1.917	4.226
15"	128.52	5.06	101.6	4	111.25	4.38	6.6	0.26	2.079	4.583
	128.52	5.06	101.6	4	111.25	4.38	6.6	0.26	2.079	4.583

* MSS SP-114

SERVICE METAL Pipe Fittings, Flanges & Valves		CHECK BY	DRAWING BY	DATE	SPECIFICATION	REDUCER COUPLING	APPROVE
			<i>Ray</i>	Oct.12.2020	MATERIAL	304/316	Date
					PROCESS/Nr.		Revise
					UNIT / SCALE	mm	Description
					DRAWING NO.	M08	Date
							Approve