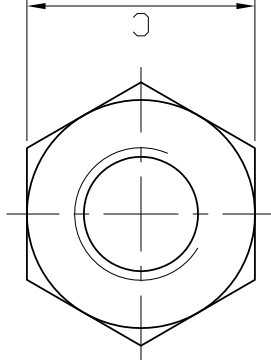
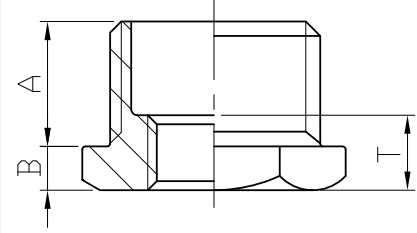


# HEX HEAD BUSHING



0.2	▽
0.3	▽
0.4	▽
0.5	▽
0.6	▽
0.7	▽
0.8	▽
0.9	▽
1.0	▽
1.2	▽
1.5	▽
2.0	▽
2.5	▽
3.0	▽
4.0	▽
5.0	▽
6.3	▽
8.0	▽
10.0	▽
12.5	▽
16.0	▽
20.0	▽
25.0	▽
31.5	▽
40.0	▽
50.0	▽
63.0	▽
80.0	▽
100.0	▽
125.0	▽
160.0	▽
200.0	▽
250.0	▽
315.0	▽
400.0	▽
500.0	▽
630.0	▽
800.0	▽
1000.0	▽

SIZE	A(Min)		B(Min)		T		C	Weight	
	mm	in	mm	in	mm	in		kg	lb
1/4"	11.18	0.44	3.05	0.12	6.6	0.26	5/8	0.01	0.022
3/8"	12.7	0.5	4.06	0.16	6.6	0.26	11/16	0.02	0.044
1/2"	14.22	0.56	4.83	0.19	6.6	0.26	7/8	0.035	0.077
3/4"	15.75	0.62	5.59	0.22	6.6	0.26	1-1/16	0.059	0.13
1"	17.15	0.67	6.35	0.25	6.6	0.26	1-3/8	0.092	0.203
1-1/4"	19.05	0.75	7.11	0.28	6.6	0.26	1-3/8	0.109	0.24
1-1/2"	20.57	0.81	7.87	0.31	6.6	0.26	1-3/8	0.121	0.268
2"	22.35	0.88	8.64	0.34	6.6	0.26	1-3/8	0.133	0.293
2-1/2"	24.13	0.95	9.40	0.37	6.6	0.26	1-3/8	0.145	0.318
3"	25.91	1.02	10.16	0.40	6.6	0.26	1-3/8	0.157	0.343
3-1/2"	27.69	1.09	10.92	0.43	6.6	0.26	1-3/8	0.169	0.368
4"	29.47	1.16	11.68	0.46	6.6	0.26	1-3/8	0.181	0.393
4-1/2"	31.25	1.23	12.44	0.49	6.6	0.26	1-3/8	0.193	0.418
5"	33.03	1.30	13.20	0.52	6.6	0.26	1-3/8	0.205	0.443
5-1/2"	34.81	1.37	13.96	0.55	6.6	0.26	1-3/8	0.217	0.468
6"	36.59	1.44	14.72	0.58	6.6	0.26	1-3/8	0.229	0.493
6-1/2"	38.37	1.51	15.48	0.61	6.6	0.26	1-3/8	0.241	0.518
7"	40.15	1.58	16.24	0.64	6.6	0.26	1-3/8	0.253	0.543
7-1/2"	41.93	1.65	17.00	0.67	6.6	0.26	1-3/8	0.265	0.568
8"	43.71	1.72	17.76	0.70	6.6	0.26	1-3/8	0.277	0.593
8-1/2"	45.49	1.79	18.52	0.73	6.6	0.26	1-3/8	0.289	0.618
9"	47.27	1.86	19.28	0.76	6.6	0.26	1-3/8	0.301	0.643
9-1/2"	49.05	1.93	20.04	0.79	6.6	0.26	1-3/8	0.313	0.668
10"	50.83	2.00	20.80	0.82	6.6	0.26	1-3/8	0.325	0.693
10-1/2"	52.61	2.07	21.56	0.85	6.6	0.26	1-3/8	0.337	0.718
11"	54.39	2.14	22.32	0.88	6.6	0.26	1-3/8	0.349	0.743
11-1/2"	56.17	2.21	23.08	0.91	6.6	0.26	1-3/8	0.361	0.768
12"	57.95	2.28	23.84	0.94	6.6	0.26	1-3/8	0.373	0.793
12-1/2"	59.73	2.35	24.60	0.97	6.6	0.26	1-3/8	0.385	0.818
13"	61.51	2.42	25.36	1.00	6.6	0.26	1-3/8	0.397	0.843
13-1/2"	63.29	2.49	26.12	1.03	6.6	0.26	1-3/8	0.409	0.868
14"	65.07	2.56	26.88	1.06	6.6	0.26	1-3/8	0.421	0.893
14-1/2"	66.85	2.63	27.64	1.09	6.6	0.26	1-3/8	0.433	0.918
15"	68.63	2.70	28.40	1.12	6.6	0.26	1-3/8	0.445	0.943
15-1/2"	70.41	2.77	29.16	1.15	6.6	0.26	1-3/8	0.457	0.968
16"	72.19	2.84	29.92	1.18	6.6	0.26	1-3/8	0.469	0.993
16-1/2"	73.97	2.91	30.68	1.21	6.6	0.26	1-3/8	0.481	1.018
17"	75.75	2.98	31.44	1.24	6.6	0.26	1-3/8	0.493	1.043
17-1/2"	77.53	3.05	32.20	1.27	6.6	0.26	1-3/8	0.505	1.068
18"	79.31	3.12	32.96	1.30	6.6	0.26	1-3/8	0.517	1.093
18-1/2"	81.09	3.19	33.72	1.33	6.6	0.26	1-3/8	0.529	1.118
19"	82.87	3.26	34.48	1.36	6.6	0.26	1-3/8	0.541	1.143
19-1/2"	84.65	3.33	35.24	1.39	6.6	0.26	1-3/8	0.553	1.168
20"	86.43	3.40	36.00	1.42	6.6	0.26	1-3/8	0.565	1.193
20-1/2"	88.21	3.47	36.76	1.45	6.6	0.26	1-3/8	0.577	1.218
21"	89.99	3.54	37.52	1.48	6.6	0.26	1-3/8	0.589	1.243
21-1/2"	91.77	3.61	38.28	1.51	6.6	0.26	1-3/8	0.601	1.268
22"	93.55	3.68	39.04	1.54	6.6	0.26	1-3/8	0.613	1.293
22-1/2"	95.33	3.75	39.80	1.57	6.6	0.26	1-3/8	0.625	1.318
23"	97.11	3.82	40.56	1.60	6.6	0.26	1-3/8	0.637	1.343
23-1/2"	98.89	3.89	41.32	1.63	6.6	0.26	1-3/8	0.649	1.368
24"	100.67	3.96	42.08	1.66	6.6	0.26	1-3/8	0.661	1.393
24-1/2"	102.45	4.03	42.84	1.69	6.6	0.26	1-3/8	0.673	1.418
25"	104.23	4.10	43.60	1.72	6.6	0.26	1-3/8	0.685	1.443
25-1/2"	106.01	4.17	44.36	1.75	6.6	0.26	1-3/8	0.697	1.468
26"	107.79	4.24	45.12	1.78	6.6	0.26	1-3/8	0.709	1.493
26-1/2"	109.57	4.31	45.88	1.81	6.6	0.26	1-3/8	0.721	1.518
27"	111.35	4.38	46.64	1.84	6.6	0.26	1-3/8	0.733	1.543
27-1/2"	113.13	4.45	47.40	1.87	6.6	0.26	1-3/8	0.745	1.568
28"	114.91	4.52	48.16	1.90	6.6	0.26	1-3/8	0.757	1.593
28-1/2"	116.69	4.59	48.92	1.93	6.6	0.26	1-3/8	0.769	1.618
29"	118.47	4.66	49.68	1.96	6.6	0.26	1-3/8	0.781	1.643
29-1/2"	120.25	4.73	50.44	1.99	6.6	0.26	1-3/8	0.793	1.668
30"	122.03	4.80	51.20	2.02	6.6	0.26	1-3/8	0.805	1.693
30-1/2"	123.81	4.87	51.96	2.05	6.6	0.26	1-3/8	0.817	1.718
31"	125.59	4.94	52.72	2.08	6.6	0.26	1-3/8	0.829	1.743
31-1/2"	127.37	5.01	53.48	2.11	6.6	0.26	1-3/8	0.841	1.768
32"	129.15	5.08	54.24	2.14	6.6	0.26	1-3/8	0.853	1.793
32-1/2"	130.93	5.15	55.00	2.17	6.6	0.26	1-3/8	0.865	1.818
33"	132.71	5.22	55.76	2.20	6.6	0.26	1-3/8	0.877	1.843
33-1/2"	134.49	5.29	56.52	2.23	6.6	0.26	1-3/8	0.889	1.868
34"	136.27	5.36	57.28	2.26	6.6	0.26	1-3/8	0.901	1.893
34-1/2"	138.05	5.43	58.04	2.29	6.6	0.26	1-3/8	0.913	1.918
35"	139.83	5.50	58.80	2.32	6.6	0.26	1-3/8	0.925	1.943
35-1/2"	141.61	5.57	59.56	2.35	6.6	0.26	1-3/8	0.937	1.968
36"	143.39	5.64	60.32	2.38	6.6	0.26	1-3/8	0.949	1.993
36-1/2"	145.17	5.71	61.08	2.41	6.6	0.26	1-3/8	0.961	2.018
37"	146.95	5.78	61.84	2.44	6.6	0.26	1-3/8	0.973	2.043
37-1/2"	148.73	5.85	62.60	2.47	6.6	0.26	1-3/8	0.985	2.068
38"	150.51	5.92	63.36	2.50	6.6	0.26	1-3/8	0.997	2.093
38-1/2"	152.29	5.99	64.12	2.53	6.6	0.26	1-3/8	1.009	2.118
39"	154.07	6.06	64.88	2.56	6.6	0.26	1-3/8	1.021	2.143
39-1/2"	155.85	6.13	65.64	2.59	6.6	0.26	1-3/8	1.033	2.168
40"	157.63	6.20	66.40	2.62	6.6	0.26	1-3/8	1.045	2.193
40-1/2"	159.41	6.27	67.16	2.65	6.6	0.26	1-3/8	1.057	2.218
41"	161.19	6.34	67.92	2.68	6.6	0.26	1-3/8	1.069	2.243
41-1/2"	162.97	6.41	68.68	2.71	6.6	0.26	1-3/8	1.081	2.268
42"	164.75	6.48	69.44	2.74	6.6	0.26	1-3/8	1.093	2.293
42-1/2"	166.53	6.55	70.20	2.77	6.6	0.26	1-3/8	1.105	2.318
43"	168.31	6.62	70.96	2.80	6.6	0.26	1-3/8	1.117	2.343
43-1/2"	170.09	6.69	71.72	2.83	6.6	0.26	1-3/8	1.129	2.368
44"	171.87	6.76	72.48	2.86	6.6	0.26	1-3/8	1.141	2.393
44-1/2"	173.65	6.83	73.24	2.89	6.6	0.26	1-3/8	1.153	2.418
45"	175.43	6.90	74.00	2.92	6.6	0.26	1-3/8	1.165	2.443
45-1/2"	177.21	6.97	74.76	2.95	6.6	0.26	1-3/8	1.177	2.468
46"	178.99	7.04	75.52	2.98	6.6	0.26	1-3/8	1.189	2.493
46-1/2"	180.77	7.11	76.28	3.01	6.6	0.26	1-3/8	1.201	2.518
47"	182.55	7.18	77.04	3.04	6.6	0.26	1-3/8	1.213	2.543
47-1/2"	184.33	7.25	77.80	3.07	6.6	0.26	1-3/8	1.225	2.568
48"	186.11								