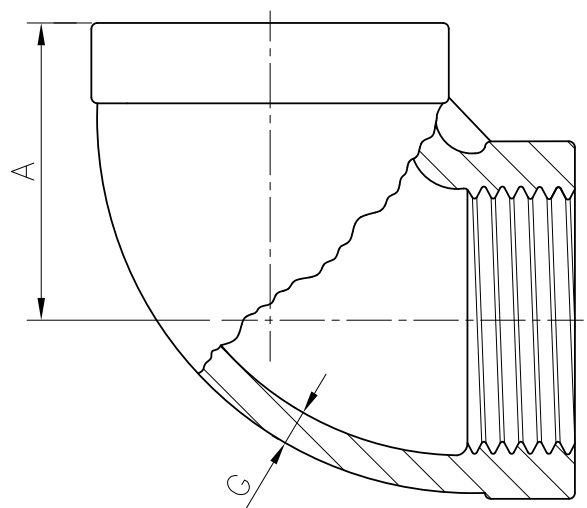


ELBOW 90°



SIZE	1/8"		1/4"		3/8"		1/2"		3/4"		1"		1-1/4"		1-1/2"		2"		2-1/2"		3"		4"	
	mm	in	mm	in	mm	in	mm	in	mm	in	mm	in	mm	in	mm	in	mm	in	mm	in	mm	in	mm	in
A	20.57	0.81	20.57	0.81	23.62	0.93	28.45	1.12	33.27	1.31	38.1	1.5	44.45	1.75	49.02	1.93	57.15	2.25	68.07	2.68	77.72	3.06	96.77	3.81
G	2.29	0.09	2.29	0.09	2.54	0.1	2.54	0.1	3.05	0.12	3.3	0.13	3.56	0.14	3.81	0.15	4.32	0.17	5.33	0.21	5.84	0.23	6.6	0.26
Weight	0.037	0.082	0.043	0.095	0.066	0.146	0.112	0.247	0.185	0.408	0.293	0.646	0.452	0.996	0.592	1.305	0.945	2.083	1.644	3.624	2.031	4.478	4.283	9.442

0.5~5	±0.1
6~30	±0.2
31~120	±0.3
121~320	±0.5
321~1000	±0.8
GENERAL TOLERANCE	
0.25	±0.1
0.63	±0.2
1.6	±0.3
0.2	±0.1
Ra	
JIS	

* MSS SP-114

CHECK BY		DRAWING BY	DATE	SPECIFICATION	Elbow 90°	
		<i>Ray</i>	Oct.12.2020	MATERIAL	304/316	
				PROCESS/Nr.		
				UNIT / SCALE	mm	
DRAWING NO.				M01		-20
Revise				Description		Date
Approve				Date		Approve

SERVICE METAL
Pipe Fittings, Flanges & Valves