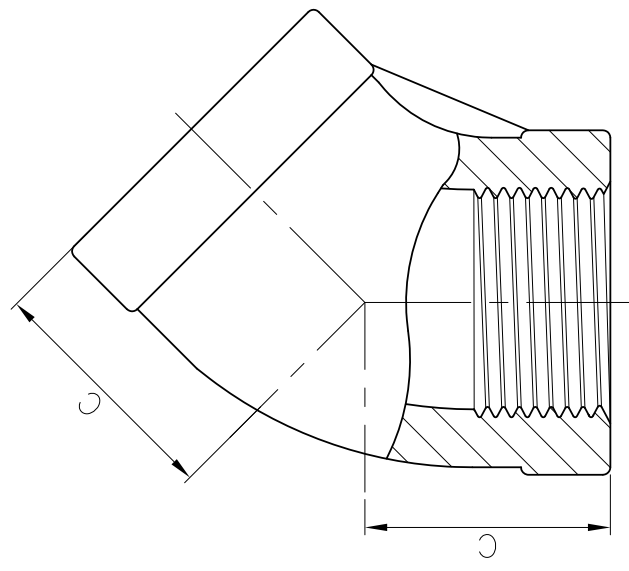


ELBOW 45°



SIZE	1/8"		1/4"		3/8"		1/2"		3/4"		1"		1-1/4"		1-1/2"		2"		2-1/2"		3"		4"	
	mm	in	mm	in	mm	in	mm	in	mm	in	mm	in	mm	in	mm	in	mm	in	mm	in	mm	in	mm	in
C	17.53	0.69	17.53	0.69	20.57	0.81	22.1	0.87	25.4	1	28.45	1.12	33.27	1.31	36.32	1.43	42.67	1.68	49.02	1.93	55.37	2.18	66.55	2.62
Weight	0.033	0.073	0.037	0.082	0.057	0.126	0.095	0.209	0.155	0.342	0.246	0.542	0.375	0.827	0.489	1.078	0.82	1.808	1.264	2.787	1.707	3.763	2.808	6.191

0.5~5	GENERAL TOLERANCE	0.1
6~30		0.2
31~120		0.3
121~320		0.5
321~1000		0.8
~		~
25		25
6.3		6.3
1.6		1.6
0.2		0.2
Ra		Ra
JIS		JIS

* MSS SP-114

SERVICE METAL Pipe Fittings, Flanges & Valves		CHECK BY	DRAWING BY	DATE	SPECIFICATION	Elbow 45°	
			<i>Ray</i>	Oct.12.2020	MATERIAL	304/316	
					PROCESS/Nr.		
					UNIT / SCALE	mm	
					Revise	Description	Date
					DRAWING NO.		Approve
					M04		-20