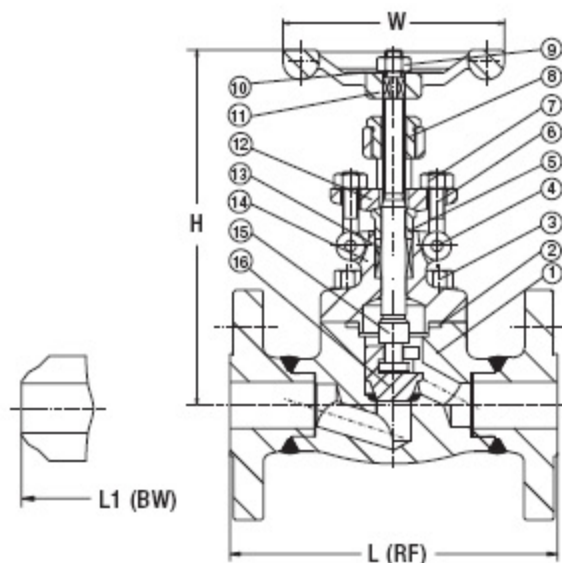


# Flanged End Globe Valves



F 152 F (150 lb)  
 F 302 F (300 lb)  
 F 602 F (600 lb)

**Integral Flanges Available**

Material Specifications		ASTM	ASTM	ASTM	ASTM
NO.	Part Name	Type A105	Type F22	Type F304(L)	Type F316(L)
1	Body	A105	A182 F22	A182 F304(L)	A182 F316(L)
2	Gasket	Corrugated SS+graphite	Corrugated SS+graphite	SS+PTFE	SS+PTFE
3	Bonnet Bolt	A193 B7	A193 B16	A193 B8	A193 B8M
4	Pin	A276 420	A276 420	A276 304	A276 304
5	Gland	A276 410	A276 410	A182 F304(L)	A182 F316(L)
6	Gland Eyebolt	A193 B7	A193 B16	A193 B8	A193 B8M
7	Gland Nut	A194 2H	A194 4	A194 8	A194 8M
8	Yoke Nut	A276 410	A276 410	A276 410	A276 410
9	H.W. Nut	A194 2H	A194 4	A194 8	A194 8M
10	Nameplate	SS	SS	SS	SS
11	Handwheel	A197	A197	A197	A197
12	Gland Flange	A216 WCB	A216 WCB	A351 CF8	A351 CF8
13	Stem Packing	Flexible Graphite	Flexible Graphite	PTFE	PTFE
14	Bonnet	A105	A276 304	A182 F304(L)	A182 F316(L)
15	Stem	A182 F6	A182 F304	A182 F304(L)	A182 F316(L)
16	Disc	A276 420	A276 304	A276 304()	A276 316(L)
	Suitable Medium	W.O.G. etc.	W.O.G. etc.	HNO <sub>3</sub> , CH <sub>3</sub> OOH etc	HNO <sub>3</sub> , CH <sub>3</sub> OOH etc
	Suitable Temperature	-29°C~425°C	-29°C~550°C	-29°C~180°C	-29°C~180°C

Note: Other materials are available upon request.

## Dimensions (in) and Weights (lb)

NPS		1/2	3/4	1	1-1/4	1-1/2	2	
L(RF) L1(BW)	150	4.25	4.61	5.00	5.51	6.50	7.99	
	300	5.98	7.01	7.99	8.50	9.02	10.51	
	600	6.50	7.48	8.50	9.02	9.49	11.50	
H(OPEN)	150, 300	6.54	6.73	8.15	9.45	10.16	12.99	
	600	6.73	8.15	9.45	10.16	12.99	14.96	
W		3.94	3.94	4.92	6.30	6.30	7.09	
Weights	150	RF	9.92	15.21	21.61	29.77	43.00	61.74
		BW	5.07	7.94	17.20	18.08	26.46	33.08
	300	RF	10.58	16.98	24.26	37.04	46.75	71.88
		BW	6.17	8.82	18.74	20.29	27.78	37.04
	600	RF	12.35	17.20	27.56	37.49	51.82	85.55
		BW	7.50	10.36	20.29	23.15	29.33	41.67