

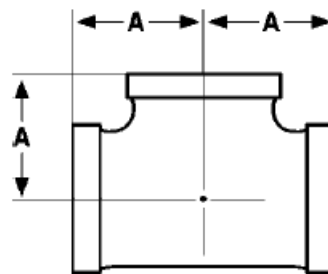
The Best Products, The Best Service...

SERVICE METAL

ONE CALL GETS IT ALL



Straight Tee 150# Malleable Iron Inches / Pounds



Size	A	Approximate Weight (in Pounds)
1/8	0.69	0.09
1/4	0.81	0.15
3/8	0.95	0.23
1/2	1.12	0.36
3/4	1.31	0.56
1	1.50	0.90
1 1/4	1.75	1.30
1 1/2	1.94	1.73
2	2.25	2.63
2 1/2	2.70	4.90
3	3.08	7.10
3 1/2	3.42	9.00
4	3.79	11.30
5	4.50	19.40
6	5.13	25.50
8	6.50	44.70

**Malleable Castings conform to ASTM A197*

**Hot-Dipped Galvanized Fittings conform to ASTM A153*

**Malleable Fitting Dimensions conform to ASME B16.3*

**Malleable Bushings, Plugs and Locknuts conform to ASME B16.14*

**Malleable Unions conform to ASME B16.39*

**NPT Threads on all fittings conform to ASME B1.20.1*

**Class 150 fittings are UL listed and FM approved at 300 psi*

**Class 300 fittings are UL listed*