

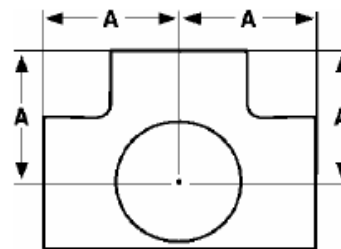
The Best Products, The Best Service...

SERVICE METAL

ONE CALL GETS IT ALL



Side Outlet Tee 150# Malleable Iron Inches / Pounds



| Size | A | Approximate Weight (in Pounds) |
|-------|------|--------------------------------|
| 1/2 | 1.12 | 0.36 |
| 3/4 | 1.31 | 0.56 |
| 1 | 1.50 | 0.90 |
| 1 1/4 | 1.75 | 1.30 |
| 1 1/2 | 1.94 | 1.73 |
| 2 | 2.25 | 2.63 |

**Malleable Castings conform to ASTM A197*

**Hot-Dipped Galvanized Fittings conform to ASTM A153*

**Malleable Fitting Dimensions conform to ASME B16.3*

**Malleable Bushings, Plugs and Locknuts conform to ASME B16.14*

**Malleable Unions conform to ASME B16.39*

**NPT Threads on all fittings conform to ASME B1.20.1*

**Class 150 fittings are UL listed and FM approved at 300 psi*

**Class 300 fittings are UL listed*