

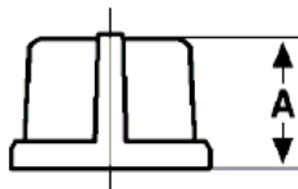
The Best Products, The Best Service...

SERVICE METAL

ONE CALL GETS IT ALL



Cap 150# Malleable Iron Inches / Pounds



Size	A	Approximate Weight (in Pounds)
1/8	0.53	0.05
1/4	0.63	0.07
3/8	0.74	0.11
1/2	0.87	0.15
3/4	0.97	0.22
1	1.16	0.35
1 1/4	1.28	0.54
1 1/2	1.33	0.68
2	1.45	0.96
2 1/2	1.70	1.72
3	1.80	2.55
3 1/2	1.90	3.12
4	2.08	4.60
5	2.32	6.42
6	2.55	9.90
8	3.20	16.90

**Malleable Castings conform to ASTM A197*

**Hot-Dipped Galvanized Fittings conform to ASTM A153*

**Malleable Fitting Dimensions conform to ASME B16.3*

**Malleable Bushings, Plugs and Locknuts conform to ASME B16.14*

**Malleable Unions conform to ASME B16.39*

**NPT Threads on all fittings conform to ASME B1.20.1*

**Class 150 fittings are UL listed and FM approved at 300 psi*

**Class 300 fittings are UL listed*