

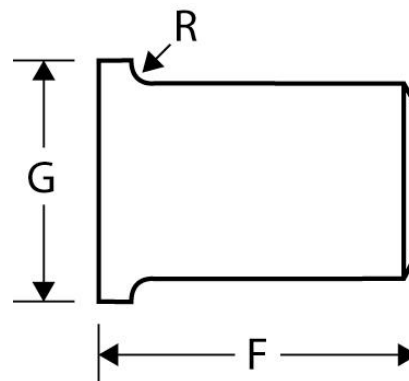
The Best Products, The Best Service...

# SERVICE METAL

ONE CALL GETS IT ALL



## Lap Joint Stub Ends EXTRA STRONG Inches / Pounds



Nominal Pipe Size	Outside Diameter	Inside Diameter	Wall and Lap Thickness	Lap Diameter (G)	Fillet Radius (R)	Overall Length (F)	Pipe Schedule	Approximate Weight (in Pounds)
1/2	.84	.546	.147	1.38	.12	3	80	.38
3/4	1.05	.742	.154	1.69	.12	3	80	.51
1	1.32	.957	.179	2.00	.12	4	80	1
1 1/4	1.66	1.28	.191	2.50	.19	4	80	1.25
1 1/2	1.90	1.50	.200	2.88	.25	4	80	1.75
2	2.38	1.94	.218	3.63	.31	6	80	3
2 1/2	2.88	2.32	.276	4.13	.31	6	80	4.5
3	3.50	2.90	.300	5.00	.38	6	80	6.5
3 1/2	4.00	3.36	.318	5.50	.38	6	80	7.75
4	4.50	3.83	.337	6.19	.44	6	80	9.5
5	5.56	4.81	.375	7.31	.44	8	80	17
6	6.63	5.76	.432	8.50	.50	8	80	23
8	8.63	7.63	.500	10.63	.50	8	80	32
10	10.75	9.75	.500	12.75	.50	10	60	53
12	12.75	11.75	.500	15.00	.50	10	XS*	62
14	14.00	13.00	.500	16.25	.50	12	XS*	75
16	16.00	15.00	.500	18.50	.50	12	40	87
18	18.00	17.00	.500	21.00	.50	12	XS*	101
20	20.00	19.00	.500	23.00	.50	12	30	114
24	24.00	23.00	.500	27.25	.50	12	XS*	138

\* XS\* designates Extra Strong (extra strong wall). This size and thickness does not correspond to any pipe schedule number.

\* Dimensions conform to ASME B16.9 & material conforms to ASTM SA-234 Grade B.