

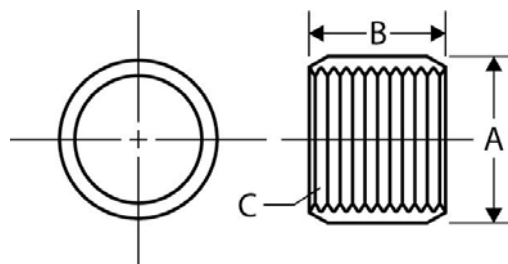
The Best Products, The Best Service...

SERVICE METAL

ONE CALL GETS IT ALL



Half Coupling Standard Merchant Inches / Pounds



| Nominal Pipe Size | A Coupling OD | B Coupling Length | C Threads per Inch | Approx. Weight per 100 pieces (in Pounds) |
|-------------------|------------------|----------------------|-----------------------|---|
| 1/8 | .563 | .344 | 27 | 2 |
| 1/4 | .719 | .531 | 18 | 4 |
| 3/8 | .875 | .531 | 18 | 5 |
| 1/2 | 1.063 | .719 | 14 | 8 |
| 3/4 | 1.313 | .750 | 14 | 12 |
| 1 | 1.576 | .937 | 11-1/2 | 18 |
| 1 1/4 | 1.900 | .969 | 11-1/2 | 23 |
| 1 1/2 | 2.200 | .969 | 11-1/2 | 32 |
| 2 | 2.750 | 1.000 | 11-1/2 | 47 |
| 2 1/2 | 3.250 | 1.500 | 8 | 96 |
| 3 | 4.000 | 1.563 | 8 | 160 |
| 3 1/2 | 4.625 | 1.625 | 8 | 222 |
| 4 | 5.000 | 1.687 | 8 | 211 |
| 5 | 6.296 | 1.750 | 8 | 380 |
| 6 | 7.390 | 1.875 | 8 | 528 |

***Merchant Steel Couplings meet the following specifications: ASTM: A865 ANSI: B1.20.1**

***ASTM specifications require standard Merchant Couplings 1/8" – 2" to be Straight Tapped and 2-1/2 - 6" to be Taper Tapped.**

***Half Couplings are chamfered on one end, the other end is square cut.**