

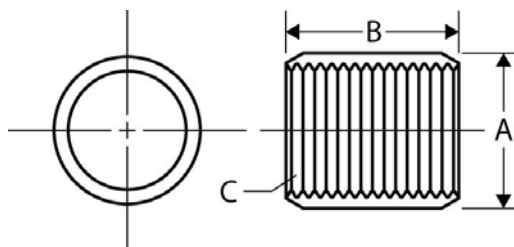
The Best Products, The Best Service...

# SERVICE METAL

ONE CALL GETS IT ALL



## Full Coupling Standard Merchant Inches / Pounds



Nominal Pipe Size	A Coupling OD	B Coupling Length	C Threads per Inch	Approx. Weight per 100 pieces (in Pounds)
1/8	.563	.750	27	3
1/4	.719	1.125	18	7
3/8	.875	1.125	18	9
1/2	1.063	1.500	14	17
3/4	1.313	1.563	14	28
1	1.576	1.938	11-1/2	40
1 1/4	1.900	2.000	11-1/2	48
1 1/2	2.200	2.000	11-1/2	67
2	2.750	2.063	11-1/2	105
2 1/2	3.250	3.063	8	209
3	4.000	3.188	8	335
3 1/2	4.625	3.313	8	482
4	5.000	3.438	8	461
5	6.296	3.688	8	852
6	7.390	3.938	8	1,127

**\*Merchant Steel Couplings meet the following specifications: ASTM: A865 ANSI: B1.20.1**

**\*ASTM specifications require standard Merchant Couplings 1/8" – 2" to be Straight Tapped and 2-1/2 - 6" to be Taper Tapped.**