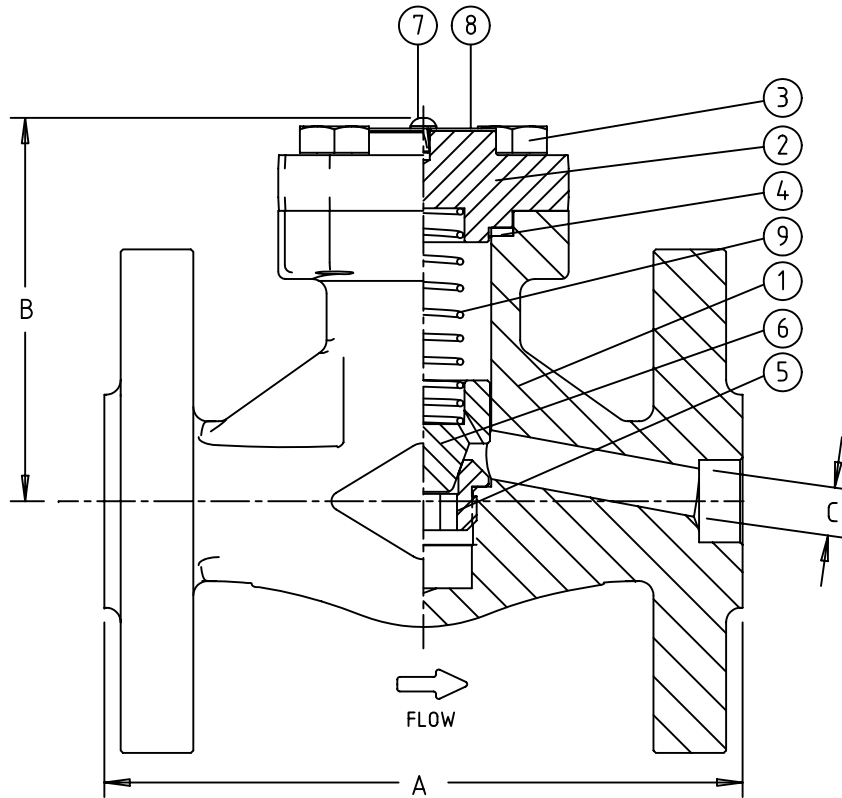


**NOTES**

1. VALVE COMPLIES WITH DESIGN AND TESTING FEATURES OF API 602
2. DESIGN AND PRESSURE/TEMPERATURE RATING TO ASME/ANSI B16.34
3. INSTALL HORIZONTAL ONLY - CAP UP
4. FLANGES INTEGRALLY FORGED WITH BODY AND COMPLY WITH ASME B16.10 & B16.5

| LIST OF PARTS |             |      |                                 |                               |
|---------------|-------------|------|---------------------------------|-------------------------------|
| ITEM          | DESCRIPTION | QTY. | MATERIAL                        | SPECIFICATION                 |
| 1             | BODY        | 1    | FORGED CARBON STEEL, PHOSPHATED | ASTM A105                     |
| 2             | CAP         | 1    | FORGED CARBON STEEL, PHOSPHATED | ASTM A105                     |
| 3             | CAPSCREW    | 4    | ALLOY STEEL                     | ASTM A193 Grade B7            |
| 4             | GASKET      | 1    | AISI 304 WITH GRAPHITE FILLER   | API 602                       |
| 5             | HF OVERLAY  | 1    | STELLITE NO. 6                  | UNS R30006                    |
| 6             | DISC        | 1    | 420 STAINLESS STEEL             | ASTM A743 GRADE CA-40         |
| 7             | DRIVE SCREW | 2    | CARBON STEEL                    | COMMERCIAL                    |
| 8             | NAMEPLATE   | 1    | ALUMINUM                        | COMMERCIAL (BLUE = 13Cr TRIM) |
| 9             | SPRING      | 1    | 302 STAINLESS STEEL             | COMMERCIAL                    |



| DIMENSIONAL DATA |       |       |       |        |        |
|------------------|-------|-------|-------|--------|--------|
| SIZE             | 1/2"  | 3/4"  | 1"    | 1 1/2" | 2"     |
| A                | 4.25  | 4.625 | 5.00  | 6.50   | 8.00   |
| B                | 3.150 | 3.543 | 3.465 | 3.937  | 4.134  |
| C                | .375  | .500  | .750  | 1.188  | 1.438  |
| WEIGHT (Lbs)     | 3/8   | 1/2   | 3/4   | 1 3/16 | 1 7/16 |



FIG. SC81 CLASS 150  
FORGED STEEL, BOLTED CAP  
SPRING PISTON CHECK VALVE

|           |                           |           |
|-----------|---------------------------|-----------|
| SIZE<br>A | DRAWING NO.<br>SC81 □□□□* | REV.<br>0 |
|-----------|---------------------------|-----------|