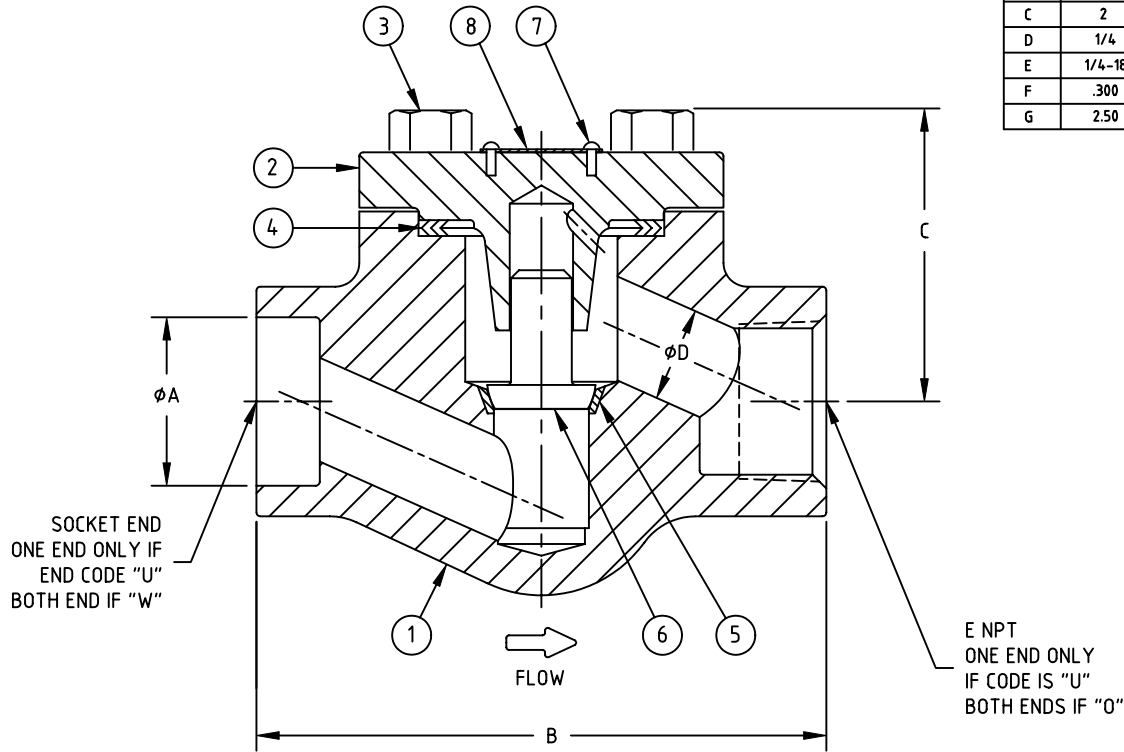


LIST OF PARTS				
ITEM	DESCRIPTION	QTY.	MATERIAL	SPECIFICATION
1	BODY	1	FORGED CARBON STEEL, PHOSPHATED	ASTM A105
2	CAP	1	FORGED CARBON STEEL, PHOSPHATED	ASTM A105
3	CAPSCREW	4	ALLOY STEEL	ASTM A193 Grade B7
4	GASKET	1	AISI 304 WITH GRAPHITE FILLER	API 602
5	HF OVERLAY	1	STELLITE NO. 6	UNS R30006
6	DISC	1	420 STAINLESS STEEL	ASTM A743 GRADE CA-40
7	DRIVE SCREW	2	CARBON STEEL	COMMERCIAL
8	NAMEPLATE	1	ALUMINUM	COMMERCIAL (BLUE = 13Cr TRIM)

DIMENSIONAL DATA								
SIZE	1/4"	3/8"	1/2"	3/4"	1"	1 1/4"	1 1/2"	2"
A	.555	.690	.855	1.065	1.330	1.675	1.915	2.406
B	3 1/4	3 1/4	3 1/4	3 1/2	4 1/2	6 1/4	6 1/4	7 1/4
C	2	2	2	2 5/16	2 3/8	3 1/8	3 1/8	3 13/16
D	1/4	1/4	3/8	1/2	3/4	1	1 3/16	1 7/16
E	1/4-18	3/8-18	1/2-14	3/4-14	1-11 1/2	1 1/4-11 1/2	1 1/2-11 1/2	2-11 1/2
F	.300	.300	.300	1.000	.600	.500	.500	.700
G	2.50	2.50	2.25	3.25	5.0	10.50	10.0	18.25

NOTES

1. VALVE COMPLIES WITH DESIGN AND TESTING FEATURES OF API 602
2. DESIGN AND PRESSURE/TEMPERATURE RATING TO ASME/ANSI B16.34
3. INSTALL HORIZONTAL ONLY - CAP UP



F = "CRACKING PRESSURE" OR
PSI TO LIFT DISC OFF SEAT

G = WEIGHT (Lbs)



FIG. OC80 CLASS 800
FORGED STEEL, BOLTED CAP
PISTON CHECK VALVE

SIZE A	DRAWING NO. OC80 □□□□*	REV. 0
-----------	---------------------------	-----------