

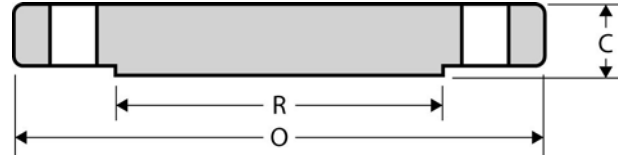
The Best Products, The Best Service...

SERVICE METAL

ONE CALL GETS IT ALL



Blind Flange CLASS 900 Inches / Pounds



Nominal Pipe Size	Outside Diam. of Flange (O)	Thick. of Flange (C)	Diam. of Raised Face (R)	No. of Holes	Diam. of Holes	Diam. of Bolts	Diam. of Bolt Circle	Approx. Weight (in Pounds)
1/2	USE <u>CLASS 1500</u> DIMENSIONS IN THESE SIZES							
3/4								
1								
1 1/4								
1 1/2								
2								
2 1/2								
3	9.50	1.50	5.00	8	1.00	0.88	7.50	29
4	11.50	1.75	6.19	8	1.25	1.12	9.25	54
5	13.75	2.00	7.31	8	1.38	1.25	11.00	87
6	15.00	2.19	8.50	12	1.25	1.12	12.50	115
8	18.50	2.50	10.62	12	1.50	1.38	15.50	200
10	21.50	2.75	12.75	16	1.50	1.38	18.50	290
12	24.00	3.12	15.00	20	1.50	1.38	21.00	415
14	25.25	3.38	16.25	20	1.62	1.50	22.00	520
16	27.75	3.50	18.50	20	1.75	1.62	24.25	600
18	31.00	4.00	21.00	20	2.00	1.88	27.00	850
20	33.75	4.25	23.00	20	2.12	2.00	29.50	1075
24	41.00	5.50	27.25	20	2.62	2.50	35.50	2025

* Dimensions conform to ASTM A/SA-105; ANSI B16.5