

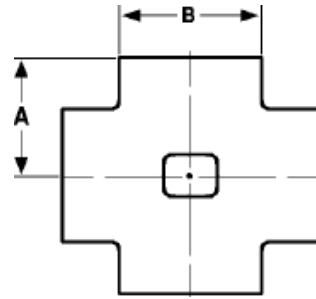
The Best Products, The Best Service...

SERVICE METAL

ONE CALL GETS IT ALL



Threaded Cross
6000# Forged Steel
Inches / Pounds



Size	A	B	Approximate Weight (in Pounds)
1/2	1.50	1.81	2.75
3/4	1.75	2.19	4.31
1	2.00	2.44	5.63
1 1/4	2.38	2.97	10.80
1 1/2	2.50	3.31	11.50
2	3.25	4.00	22.20

**ASTM SA-105, ANSI B16.11*