

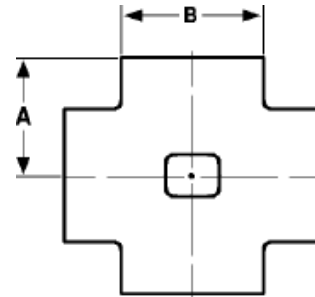
The Best Products, The Best Service...

# SERVICE METAL

ONE CALL GETS IT ALL



Socket Weld Cross  
**6000# Forged Steel**  
Inches / Pounds



Size	A	B	Approximate Weight (in Pounds)
1/2	1.13	1.33	1.30
3/4	1.38	1.62	2.40
1	1.56	1.96	3.84
1 1/4	1.75	2.31	5.16
1 1/2	2.00	2.62	9.13
2	2.24	3.27	9.65

*\*ASTM SA-105, ANSI B16.11*