

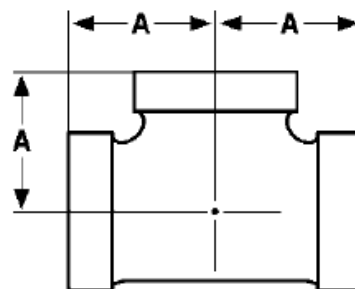
The Best Products, The Best Service...

SERVICE METAL

ONE CALL GETS IT ALL



Straight Tee 300# Malleable Iron Inches / Pounds



Size	A	Approximate Weight (in Pounds)
1/4	0.94	0.27
3/8	1.06	0.42
1/2	1.25	0.65
3/4	1.44	1.07
1	1.63	1.63
1 1/4	1.94	2.53
1 1/2	2.13	3.40
2	2.50	5.20
2 1/2	2.94	7.96
3	3.38	12.60
4	4.50	23.90

**Malleable Castings conform to ASTM A197*

**Hot-Dipped Galvanized Fittings conform to ASTM A153*

**Malleable Fitting Dimensions conform to ASME B16.3*

**Malleable Bushings, Plugs and Locknuts conform to ASME B16.14*

**Malleable Unions conform to ASME B16.39*

**NPT Threads on all fittings conform to ASME B1.20.1*

**Class 150 fittings are UL listed and FM approved at 300 psi*

**Class 300 fittings are UL listed*