

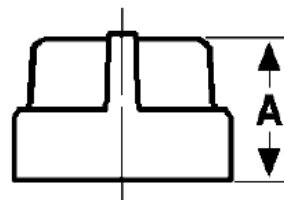
The Best Products, The Best Service...

SERVICE METAL

ONE CALL GETS IT ALL



Cap 300# Malleable Iron Inches / Pounds



Size	A	Approximate Weight (in Pounds)
1/4	0.78	0.10
3/8	0.83	0.15
1/2	0.98	0.23
3/4	1.08	0.35
1	1.26	0.58
1 1/4	1.38	0.94
1 1/2	1.43	1.18
2	1.68	1.94
2 1/2	2.06	3.32
3	2.17	4.71
4	2.48	7.68

**Malleable Castings conform to ASTM A197*

**Hot-Dipped Galvanized Fittings conform to ASTM A153*

**Malleable Fitting Dimensions conform to ASME B16.3*

**Malleable Bushings, Plugs and Locknuts conform to ASME B16.14*

**Malleable Unions conform to ASME B16.39*

**NPT Threads on all fittings conform to ASME B1.20.1*

**Class 150 fittings are UL listed and FM approved at 300 psi*

**Class 300 fittings are UL listed*