

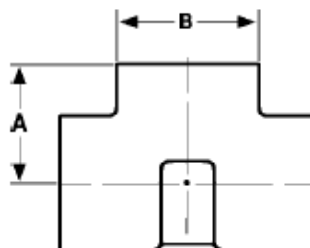
The Best Products, The Best Service...

# SERVICE METAL

ONE CALL GETS IT ALL



## Threaded Tee 3000# Forged Steel Inches / Pounds



Size	A	B	Approximate Weight (in Pounds)
1/8	0.81	0.88	0.35
1/4	0.97	1.00	0.42
3/8	1.12	1.31	0.77
1/2	1.31	1.50	1.25
3/4	1.50	1.81	1.85
1	1.75	2.19	3.07
1 1/4	2.00	2.44	3.55
1 1/2	2.38	2.97	6.72
2	2.50	3.31	7.20
2 1/2	3.25	4.00	13.1
3	3.75	4.75	21.6
4	4.50	6.00	39.7

*\*ASTM SA-105, ANSI B16.11*