

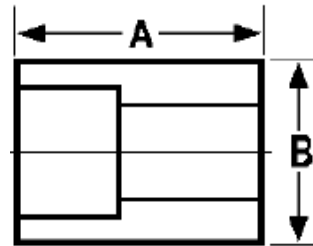
The Best Products, The Best Service...

SERVICE METAL

ONE CALL GETS IT ALL



Socket Weld Half Coupling 3000# Forged Steel Inches / Pounds



Size	A	B	Approximate Weight (in Pounds)
1/4	1.00	0.82	0.14
3/8	1.07	0.98	0.18
1/2	1.26	1.20	0.21
3/4	1.44	1.41	0.33
1	1.62	1.74	0.64
1 1/4	1.69	2.10	0.96
1 1/2	1.75	2.36	1.22
2	2.24	2.89	2.10
2 1/2	2.31	3.54	3.08
3	2.37	4.21	4.29
4	2.63	5.30	7.05

**ASTM SA-105, ANSI B16.11*