

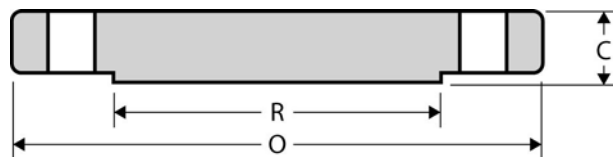
The Best Products, The Best Service...

SERVICE METAL

ONE CALL GETS IT ALL



Blind Flange CLASS 1500 Inches / Pounds



Nominal Pipe Size	Outside Diam. of Flange (O)	Thick. of Flange (C)	Diam. of Raised Face (R)	No. of Holes	Diam. of Holes	Diam. of Bolts	Diam. of Bolt Circle	Approx. Weight (in Pounds)
1/2	4.75	0.88	1.38	4	0.88	0.75	3.25	4
3/4	5.12	1.00	1.69	4	0.88	0.75	3.50	6
1	5.88	1.12	2.00	4	1.00	0.88	4.00	8
1 1/4	6.25	1.12	2.50	4	1.00	0.88	4.38	9
1 1/2	7.00	1.25	2.88	4	1.12	1.00	4.88	13
2	8.50	1.50	3.62	8	1.00	0.88	6.50	25
2 1/2	9.62	1.62	4.12	8	1.12	1.00	7.50	35
3	10.50	1.88	5.00	8	1.25	1.12	8.00	48
4	12.25	2.12	6.19	8	1.38	1.25	9.50	73
5	14.75	2.88	7.31	8	1.62	1.50	11.50	140
6	15.50	3.25	8.50	12	1.50	1.38	12.50	160
8	19.00	3.62	10.62	12	1.75	1.62	15.50	300
10	23.00	4.25	12.75	12	2.00	1.88	19.00	510
12	26.50	4.88	15.00	16	2.12	2.00	22.50	690
14	29.50	5.25	16.25	16	2.38	2.25	25.00	975
16	32.50	5.75	18.50	16	2.62	2.50	27.75	1300
18	36.00	6.38	21.00	16	2.88	2.75	30.50	1750
20	38.75	7.00	23.00	16	3.12	3.00	32.75	2225
24	46.00	8.00	27.25	16	3.62	3.50	39.00	3625

* Dimensions conform to ASTM A/SA-105; ANSI B16.5