

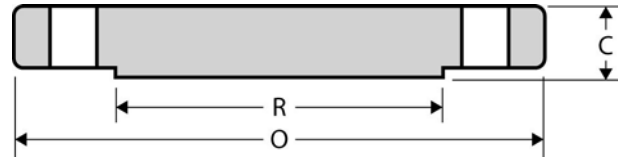
The Best Products, The Best Service...

SERVICE METAL

ONE CALL GETS IT ALL



Industry Standard
Blind Flange
CLASS 125
Inches / Pounds



Nominal Pipe Size	Outside Diam. of Flange (O)	Thick. of Flange (C)	Diam. of Raised Face (R)	No. of Holes	Diam. of Holes	Diam. of Bolt Circle	Approx. Weight (in Pounds)
30	38.75	2.12	33.75	28	1.38	36.00	681
36	46.00	2.38	40.25	32	1.63	42.75	1,068
42	53.00	2.62	47.00	36	1.63	49.50	1,628
48	59.50	2.75	53.50	44	1.63	56.00	2,090

** Commonly referred to as a class 150# in large diameter. Can be furnished with a raised face. All dimensions measured in inches. All weights in pounds and are approximate. Pressure ratings from AWWA table 4 Class E. Pressure rating at atmospheric temperature is 275 psi. These flanges have the same diameter and drilling as ANSI/ASME B16.1 class 125 cast-iron flanges. In sizes 24 in. and smaller they also match ANSI/ASME B16.5 150-psi standard for steel flanges. The thickness of a 150-psi flange from which the raised face has been removed shall be no less than dimension C minus 0.06 in.*

** No national standard or governing body control Industry Standard Flanges. The dimensions stated herein are derived from industry practices and are believed to be correct. These Dimensions are Published for Informational Purposes Only!*